

Forest Industries Asks for the Braddon by-election

6 BUILDING BLOCKS FOR GROWTH



Forestry in North-West Tasmania – A renewable industry with a BIG future

Tasmania's renewable Forest Industries are an enormously important contributor to the North-West's economy.

They employ around 700 people in the electorate of Braddon, and indirectly support a further 1700 jobs. Many more businesses rely on the economic activity driven by Forest Industries.

Forest Industries contribute \$574 million to the Tasmanian economy.

Forest Industries employ more than 10,000 Tasmanians directly and indirectly.



Forest Industries in Braddon are focused in Burnie, Smithton, Somerset and Strahan. While the industry has undergone significant changes over the past decade, it remains an integral part of Tasmania's economic and social fabric.

With the right policy settings our Forest Industries can have an even BIGGER future. The right trees, planted in the right place, at the right scale, are needed to drive growth in jobs and investment in our Forest Industries.

Braddon Electorate

Products/industries in the region:

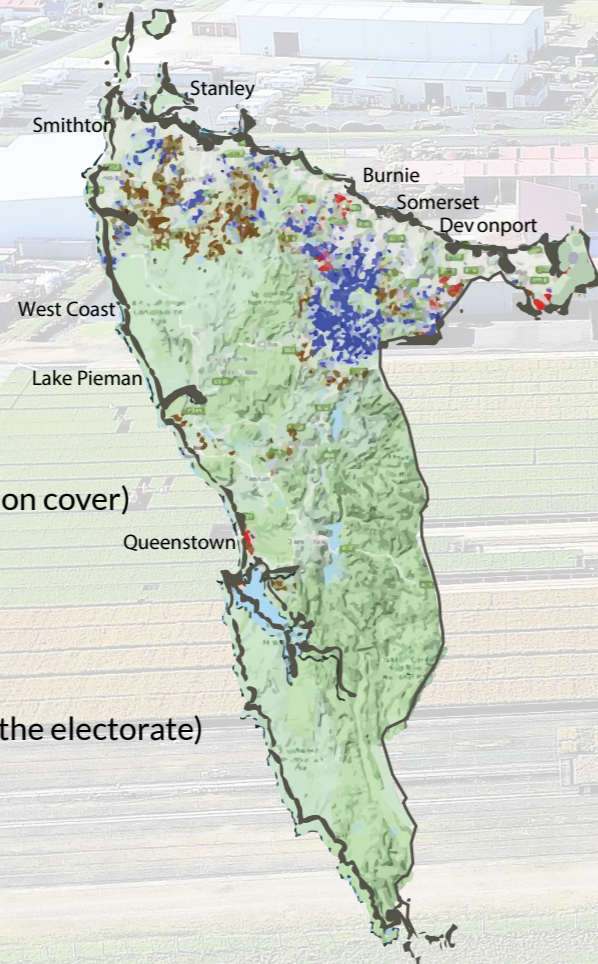
- Hardwood and softwood plantations
- Managed native forest
- Forestry-related port activity
- Sawmills
- Silvicultural services
- Plantation nursery services
- Woodchip mill

Big employers:

- Forico (Throughout the electorate, pictured on cover)
- Britton Timbers (Smithton, pictured above)
- Ta Ann Tasmania (Smithton)
- Specialty Veneers Pty Ltd (Somerset)
- Australian Marshalling Services (Burnie)
- Hydrowood (Lake Pieman)
- Sustainable Timbers Tasmania (Throughout the electorate)

KEY

- Production native forest
- Softwood plantations
- Hardwood plantations



Braddon's 6 building blocks for growth

Political parties and candidates contesting Braddon are asked to commit to:

- 1. Drive the planting of up to 14,000 hectares of new plantations in North-West Tasmania, creating up to 150 new direct and 300 indirect jobs**

 - Remove the existing Carbon Farming Initiative (CFI) water restrictions, in both the Plantation Forestry and Farm Forestry methodologies, so that our Forest Industries can fully participate in the CFI, store more carbon and invest in new plantations.
 - Commit \$2 million to a Timber Plantation Development Project between government, landowners and industry to identify plantation investment opportunities in North-West Tasmania.
- 2. Provide certainty for our native forestry sector**

 - Secure the future of our sustainable native Forest Industries by delivering on the renewed 20-year Tasmanian Regional Forest Agreement, and work with State and Federal Government to ensure there are no more forest lock-ups and no loss in net timber supply.
- 3. Incentivise bioenergy from wood residues**

 - Commit to recognising and incentivising new bioenergy and renewable heat energy projects in the National Energy Guarantee (NEG) or any such energy policy mechanism.
 - Commit \$2 million to a Bioenergy Commercialisation node in Braddon to help industry demonstrate the feasibility of bioenergy-based projects.
- 4. Invest in manufacturing innovation**

 - Commit to working with industry on programs that incentivise innovation and value-adding in timber and wood processing in North-West Tasmania to boost capacity, lower energy costs and create more local manufacturing jobs.
 - Commit \$4 million over 4 years to extend the operation of the Tasmanian node of the National Institute for Forest Products Innovation, with a balanced focus on R&D projects that benefit North-West Tasmania and seek matching Tasmanian Government funding.
- 5. Support skills and training**

 - Work with industry and the Tasmanian Government to develop a Forest Industries Skills & Training Plan to ensure we have the skilled local workforce to support growth in our sector.
 - Commit \$1 million to support the implementation of the Plan.
- 6. Upgrade local road infrastructure**

 - Commit to working with industry and the Tasmanian Government to identify and prioritise key infrastructure projects such as roads, bridges, Burnie Port access and upgrades to enhance forest industry safety and improve productivity.
 - Commit \$1 million for a scoping study to identify priority infrastructure projects for timber industries that will enhance safety and increase productivity.